



ST. THERESA

CATHOLIC CHURCH & SCHOOL

our church | our school | our future

CAPITAL CAMPAIGN PHASE II

Houston, Texas



A LETTER FROM FATHER PHIL & PRINCIPAL MELISSA ILSKI



Dear Parishioners and friends,

We are happy that as a community we have reached a point in our parish life whereby we are able to look seriously, with deep and abiding faith, at the needs of our church and school. It has been over three years since we dedicated the newly renovated gym and fellowship hall. The renewed gymnasium has not only significantly improved athletic programs, it has also provided the school with a safe and welcoming gathering place for the entire school community to prayerfully begin each day. Our beautifully renovated Fellowship Hall, once the original building of the church, now faithfully serves the needs of many parish, school and community members. The hall was blessed on Holy Thursday 2013 when those celebrating the Mass of the Lord's Supper processed with the Eucharist into the new community space. There could have been no finer blessing to a re-ordered building, reminding us in the Eucharist that Jesus gave us the night before he died, was the gift par excellence until He returns.

In receiving the Eucharist we become what we receive, the body of Christ in this place. That is why we are excited, that as a community, we now have the opportunity to renew the most sacred space of God's House. A wonderful new building was created when we outgrew the space of the original church. As we continue to grow, we are excited to begin planning for how we can now accommodate the continued growing number of young parishioners, senior parishioners, newlyweds, empty-nesters, young church families and school children and their parents. All these groups have made St. Theresa their spiritual home over the last decade, joining those founding parishioners that made this parish possible seventy years ago.

“If we all help in whatever way God calls each of us to assist, we will
be able to build His house for the next seventy years and beyond.”

Along with the renovation of our place of worship, we have the opportunity to include a much-needed welcoming area, by adding a wonderful narthex. This gathering space will provide a beautiful transition of mind, body and spirit, in preparation for the Mass. It will also serve as an overflow for high days and holidays, with seating for an additional two hundred people.

We are blessed with blossoming numbers in our parish, so we are also overwhelmed with an exponential increase in students attending our beloved school. We have watched our enrollment soar from 198 students in 2012, to almost 300 students filling our classrooms in 2016. The school offers two sections of almost every grade level, through 5th grade this year. The demand has been so great that the students have already outgrown the brick and mortar building, requiring the school to secure six portable classrooms. Additional classrooms will continue to be an urgent need as the two sections of classes move into middle school each subsequent year.

As we move forward in faith, and analyze the needs of our church and school, we ask you to prayerfully consider how you can further this project. If we all help in whatever way God calls each of us to assist, we will be able to build His house for the next seventy years and beyond. This is our opportunity to leave a legacy of our faith to the future generations.

With every good wish,

Reverend Phil Lloyd
Pastor, St. Theresa Catholic Church

Melissa Ilski
Principal, St. Theresa Catholic School

OUR HISTORY



St. Theresa has served the Catholic faithful for over 70 years, since its founding in 1946.

“WE ARE BLESSED WITH A RICH COMMUNITY OF FAITH AND TRADITION THAT LINKS ONE GENERATION TO THE OTHER IN AN UNBROKEN CHAIN OF DETERMINATION AND PERSEVERANCE.”

As we embark on this journey of faith and sacrifice as a parish family, we recall with grateful hearts the courage and convictions of our previous parish leaders and parishioners, who sacrificed to lay the strong foundation upon which our parish community stands today.

JANUARY, 1946

The Most Rev. Christopher E. Byrne, Bishop of Galveston, established a new parish, St. Theresa of the Little Flower and assigned Rev. Ralph Diefenbach as pastor.

Father Diefenbach, born in St. Louis Missouri and graduate of St. Thomas High School in Houston was Ordained to the priesthood in 1937. Prior to St. Theresa, he served as assistant pastor of St. Anthony Church in Beaumont and St Joseph's in Houston, as well as Chaplain to the American Troops in Europe in World War II.

APRIL 14, 1946

The first Mass was celebrated in the nearby Memorial School auditorium, with 90 registered parishioners.

AUGUST 10, 1947

The cornerstone of St. Theresa Elementary School was blessed by Bishop Byrne.

FEBRUARY 15, 1948

The first 10 classrooms were dedicated and The Sisters of the Incarnate Word were assigned to teach the 220 students in grades 1st through 8th. Masses were offered in classrooms of the school until 1949 when the school auditorium was built and served as temporary Sanctuary until December 1959.

DECEMBER, 1959

The cornerstone of the present parish was dedicated and blessed. The Christmas midnight Mass, 1959, was the first Mass celebrated in the new church. Father Diefenbach was not present at this first Mass. On June 11, 1959, just six months prior to the dedication, the beloved pastor, was killed in the crash of a small airplane. At the time of his death, at age 45, this dedicated young priest had build a new church, rectory, a 17-classroom school, library and cafeteria. These structures stand as a memory of how devoted he was to serve our St. Theresa Parish Community.

FROM 1959 – 2005

Reverend C.J. Alleman served as administrator, followed by pastors,

Reverend George V. Rhein, 1960 – 1970

Reverend John E. McCarthy, 1970 – 1972

Reverend Denis Lynch, 1972 – 1977

Reverend Edward Randall, 1977 – 1982

Reverend Rodney Poythress, 1982 – 1987

Reverend Benjamin Smaistrle, 1987 – 2000

Reverend Stephen Tiemann, 2000 – 2005

IN FEBRUARY 2006

Rev. Phil Lloyd was welcomed to the parish to continue to build and strengthen our faith community. Under his direction the parish and school have both experienced tremendous growth. In 2013, we completed the “All Are Welcome” capital campaign, which transformed the original 1946 church into a beautiful fellowship hall with meeting rooms for different ministries, as well as the conversion of the Community Center into a state of the art gymnasium that is used by parish and school sports leagues. These buildings are used morning, noon and into the evening almost every day.

OUR CHALLENGE

These are exciting times here at St. Theresa and it is not everyday that a parish community has such an opportunity to build upon such a firm foundation.

“SEIZING THIS OPPORTUNITY AND REALIZING THE COMPLETION OF OUR ENHANCEMENTS TO OUR PARISH CAMPUS WILL NOT COME WITHOUT SACRIFICE.”

Throughout the history of our parish, the people of St. Theresa have always made the necessary sacrifices in all aspects of parish life and Stewardship. We are confident that these projects will be met with the same degree of commitment and participation.



In order to preserve and improve our St. Theresa facilities, as well as strengthen our life together, the parish leadership has initiated the *Our Church, Our School, Our Future* Capital Campaign. This fundraising effort will address the following projects:

Parish & School Renovation & Expansion

Over the last several years, parish & school staff and lay leadership have discussed, discerned and studied the need and potential growth of our parish. They have engaged countless volunteers, leaders, parishioners and parents from throughout St. Theresa to help determine the future. From their labor, a plan for major renovations and expansion of our facilities has been developed. These plans provide for liturgical enhancements to our current worship space, more welcoming facilities, more classrooms, and a healthy and safe environment for all who worship and learn at St. Theresa Catholic Church and School.

The renovation and expansion of our Church will include:

- Construction of a new narthex (entryway) that will connect the Church to the old rectory (which now serves as the parish office/pastoral center) to allow gatherings of parishioners and flex seating as needed.
- Redesign and improvements to the sanctuary, including a suspended crucifix and a prominent location for the tabernacle located directly behind the altar, all while being accessible for everyone.
- New baptismal font and more devotional space.
- Seating capacity to 640 people with new pews with the ability to add upwards of 300+ flex seats between the church and new narthex.
- Handicapped accessibility.
- Upgraded mechanical systems (HVAC, sound system, and audio visual).
- Construction of a plaza in front of the Church for gatherings and celebrations.

Preliminary estimated costs for these improvements to our Church are \$6.2 million



The renovation and expansion of our School will include:

- Construction of a new building to house 17 new classrooms and meet the needs of our growing population. This new facility will replace the portable classrooms as well as the older classroom structure.
- A new main entrance and administrative area located on the east side of the property facing Durford Street.
- A sacred space for prayer and catechesis.

Preliminary estimated costs for these improvements to our School are \$4.7 million

The construction of a Parish Rectory:

In the near future, we plan to build a modest, energy efficient home for our parish priest. This could also provide housing for visiting or temporarily assigned priests of our Parish.

The Archdiocesan Capital Campaign:

In 2017/2018, every parish in the Archdiocese of Galveston-Houston will participate in an Archdiocesan Capital Campaign. This very important Archdiocesan-wide campaign will seek to raise \$150,000,000 in support of the needs of our Archdiocese including:

- Address renovations and modernization of St. Mary Seminary to include:
 - Construction of new dormitory
 - Renovation of two existing dormitories
 - Refurbishing the plant infrastructure
- Fund educational endowments
- Support faith formation

As part of the *Our Church, Our School, Our Future* Campaign, we have included the archdiocesan campaign case into our parish case so as to conduct only one all-encompassing campaign versus multiple effort at the same time. Our financial commitment to support this campaign is \$701,667. More details on the *IGNITE: Our Faith, Our Mission* Capital Campaign will be available on the Archdiocesan website soon at www.archgh.org.

PROJECTED PROJECT COSTS

Church & Narthex	\$6,200,000
School Building	\$4,700,000
Rectory	\$500,000
Diocesan Campaign	\$701,667
Total Projects	\$12,101,667
Pledges Received as of December 2016* ..	(\$3,867,000)
Balance to Raise	\$8,234,667

* The parish received a \$2,500,000 bequest from the estate of Leo Etlinger for the renovation and expansion of the church.

HOW YOU CAN GET INVOLVED



Throughout the *Our Church, Our School, Our Future* Campaign, Father Phil, the Capital Campaign Committee and volunteer workers will reach out to all members of our community to convey our parish's dreams for the future and describe how everyone can get involved. Several important events are being held in order to give every parish family an opportunity to participate.

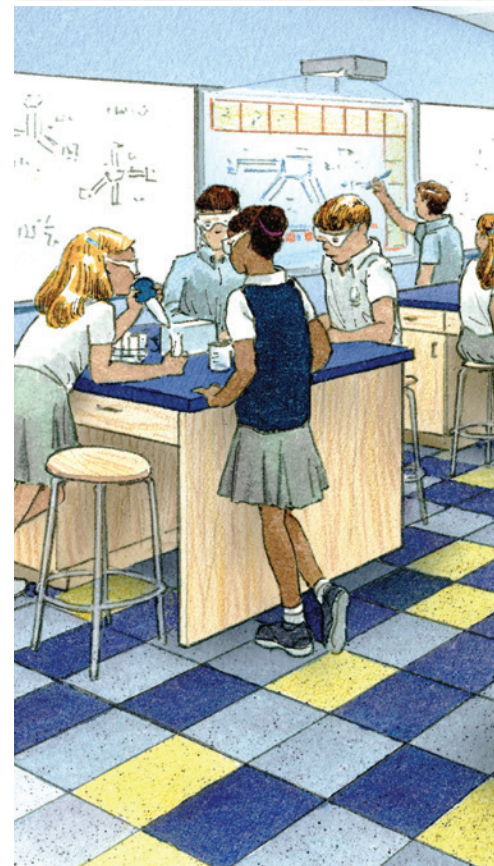
- 1) Every registered family will be invited to attend one of a series of campaign receptions. These receptions will allow our parishioners the opportunity to gather as a family and to learn about the needs of our parish.
- 2) The families that do not attend a campaign reception will be able to read about our plans through this campaign brochure, which will be mailed to their homes. These families will also be asked to consider all the information contained in the brochure and then make a prayerful decision about how they will support this effort.
- 3) Those who do not respond by Commitment Weekend will be personally contacted by fellow parishioners, volunteering their time over several weeks for the success of the campaign. These volunteers will be giving their time to undertake the vital task of making home visitations and increasing the awareness of this campaign.

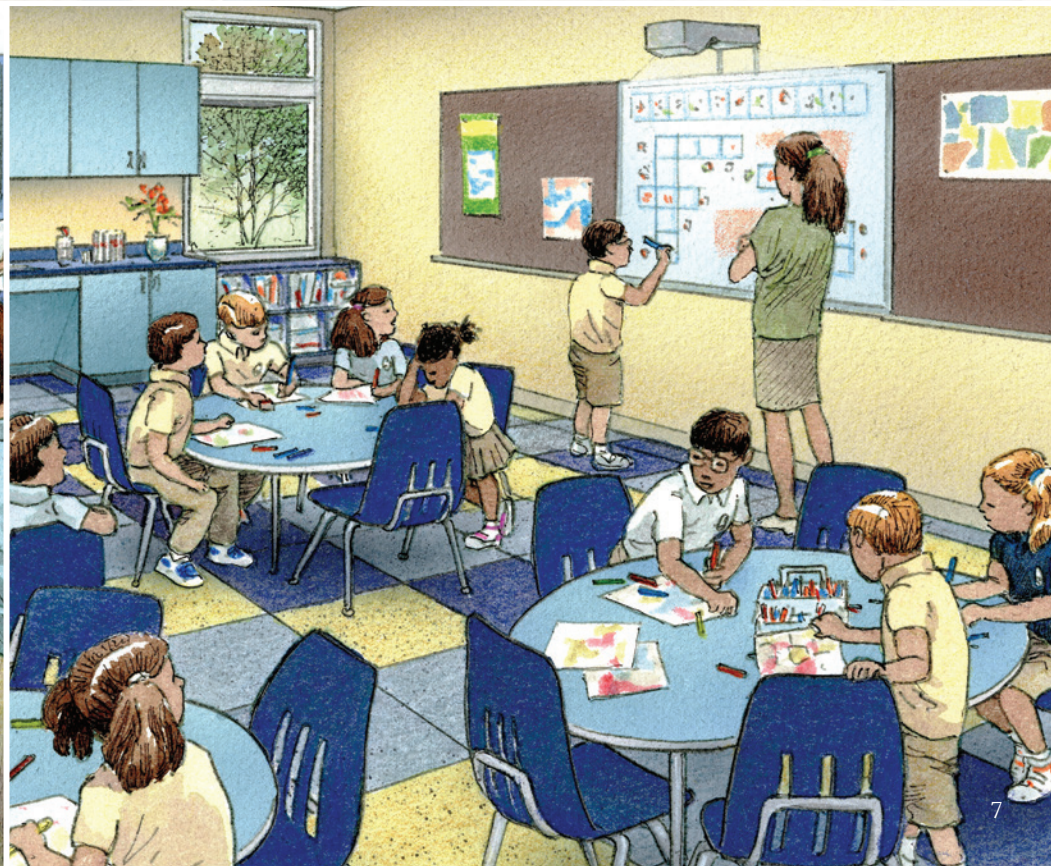
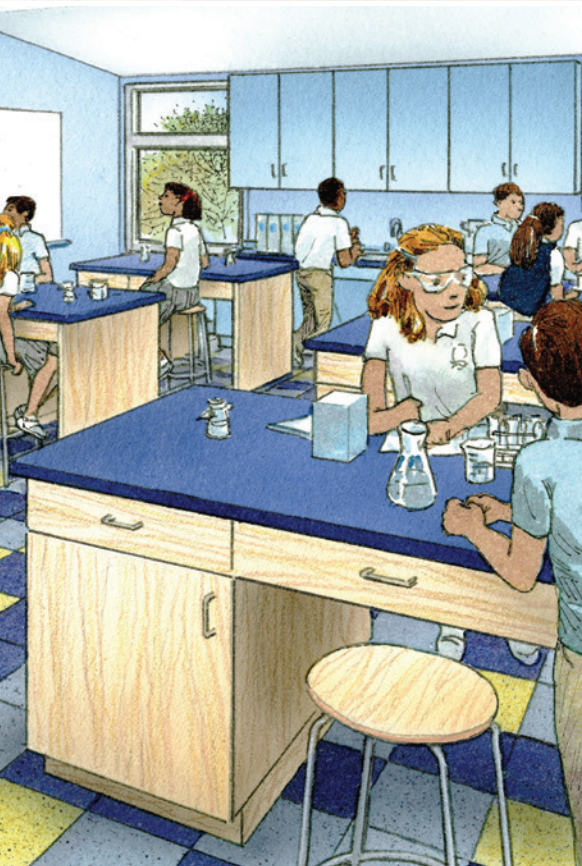
“Not everyone can make the same size gift,
but everyone can make the same size sacrifice.”

DURING THIS CAMPAIGN, WE ARE ASKING EVERYONE WHO CALLS ST. THERESA HOME TO:

1. Pray for the success of the Campaign.
2. Be an ambassador for St. Theresa by getting involved and by sharing this information with as many people as you can with enthusiasm and encourage them to get involved.
3. Make your sacrificial pledge.

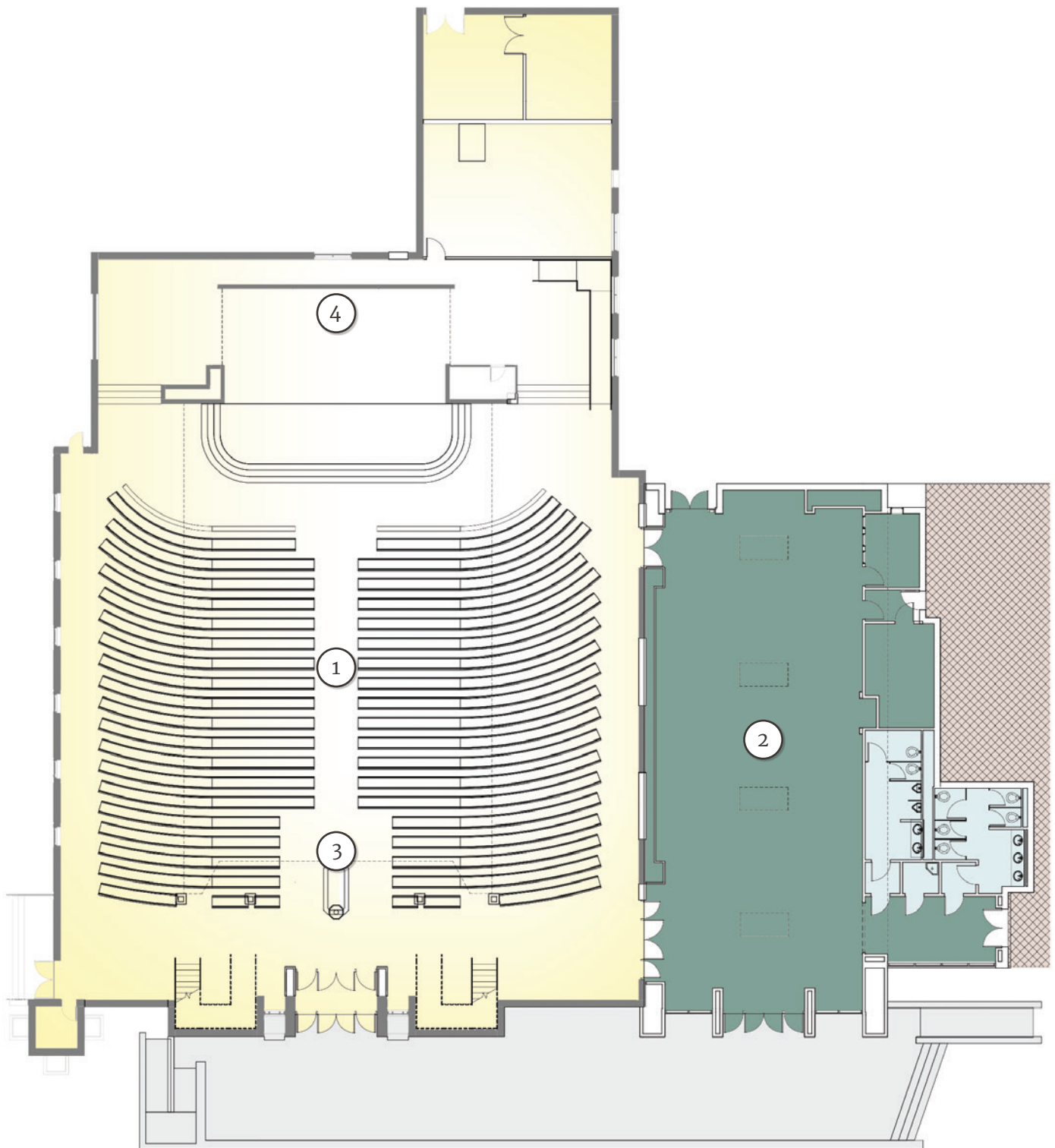
Whether you participate by attending a campaign reception, responding at Mass or by mail, or by graciously receiving a parish volunteer into your home, it is your act of involvement that will make this campaign a success.





ST. THERESA CATHOLIC CHURCH

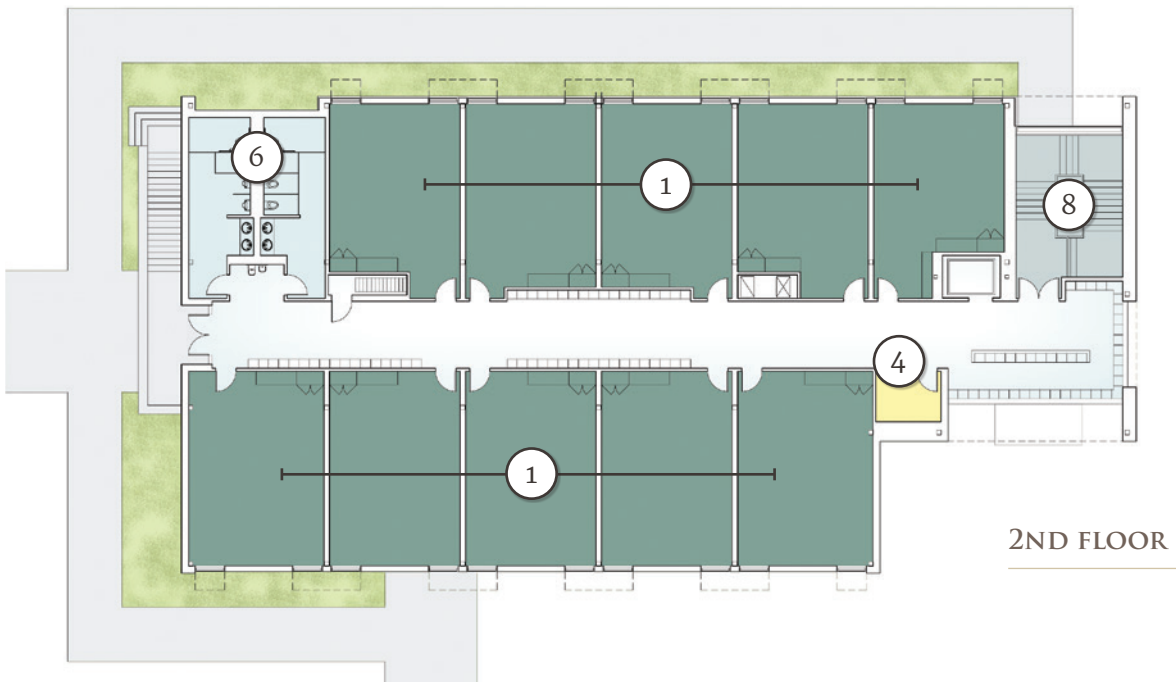
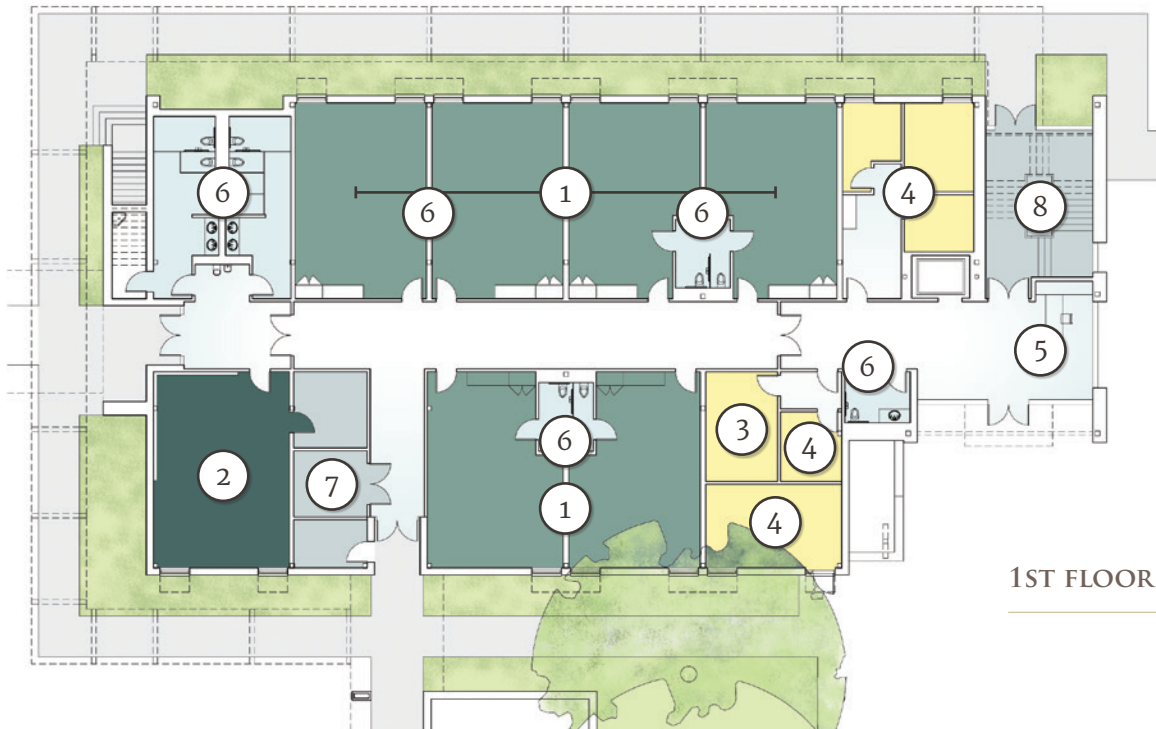
FLOOR PLAN



FLOOR PLAN KEY

1. Church
2. New Narthex
3. Baptismal Font
4. Tabernacle

ST. THERESA CATHOLIC SCHOOL FLOOR PLANS



FLOOR PLAN KEY – 1ST FLOOR & 2ND FLOOR

- | | |
|--------------------|-----------------|
| 1. Classrooms | 5. Lobby |
| 2. Sacred Space | 6. Restrooms |
| 3. Conference Room | 7. Storage Area |
| 4. Offices | 8. Stairwell |

WE NEED YOUR SPECIAL GENEROSITY



No one can tell you how much you should give. The individual parishioner/family is the only one who actually decides what to contribute, since the financial obligations of each family are different. What you give will be held in the strictest confidence.

**THIS IS OUR PARISH
AND ONLY THROUGH
SACRIFICE CAN WE
ACHIEVE OUR GOALS.**

All contributions from the smallest to the largest will be gratefully appreciated. Your decision is a personal one. It should be made in good conscience and in true Christian spirit.

St. Theresa is looking to raise as much as possible toward the overall campaign goal of \$9.6 million. Every member of our parish community is integral to our success in reaching this goal, and, therefore, each family is asked to consider making a pledge to the campaign to the best of their ability.

Everyone is asked to prayerfully consider how their generosity can reflect their gratitude for the gifts that God has given them. We know that a sacrificial pledge will be a challenge for some of our parish households, therefore, it is vital to the success of our campaign that those who are able to make larger pledges do so.

In Deuteronomy 16:10 we are reminded that –
“the measure of your own free will offering should be in proportion to the blessing the Lord has bestowed on you”.

Individuals who are financially capable of pledging \$25,000, \$50,000, \$100,000 or more, are asked to step forward and become leaders of our campaign. Please review the Suggested Gift Plans on the following page and choose a plan that is right for you and your family.

AS YOU CONSIDER YOUR PLEDGE

- Payments may be made over a period of three (3) years. A longer period can be arranged if necessary.
- Payment reminders will be mailed to you in accordance with the payment plan you choose.
- Pledge payments are fully deductible for tax purposes.
- Please make checks payable to: **St. Theresa Capital Campaign**

SUGGESTED GIFT PLANS

Total Gift	10% Down Payment	3 Annual Payments	6 Semi-Annual Payments	12 Quarterly Payments	36 Monthly Payments	Daily Sacrifice
\$1,000,000	\$100,000	\$300,000	\$150,000	\$75,000	\$25,000	\$821.92
\$500,000	\$50,000	\$150,000	\$75,000	\$37,500	\$12,500	\$401.96
\$250,000	\$25,000	\$75,000	\$37,500	\$18,750	\$6,250	\$205.48
\$100,000	\$10,000	\$30,000	\$15,000	\$7,500	\$2,500	\$82.19
\$50,000	\$5,000	\$15,000	\$7,500	\$3,750	\$1,250	\$41.10
\$25,000	\$2,500	\$7,500	\$3,750	\$1,875	\$625	\$20.55
\$20,000	\$2,000	\$6,000	\$3,000	\$1,500	\$500	\$16.44
\$15,000	\$1,500	\$4,500	\$2,250	\$1,125	\$375	\$12.33
\$10,000	\$1,000	\$3,000	\$1,500	\$750	\$250	\$8.22
\$8,000	\$800	\$2,400	\$1,200	\$600	\$200	\$6.58
\$6,000	\$600	\$1,800	\$900	\$450	\$150	\$4.93
\$5,000	\$500	\$1,500	\$750	\$375	\$125	\$4.11
\$4,000	\$400	\$1,200	\$600	\$300	\$100	\$3.29

PLEDGES VIA CASH OR CHECK

Simply complete your pledge card by selecting the amount of your pledge and down payment (optional, but encouraged). Make sure to select your method of payment, i.e., monthly, quarterly, semi-annual or annual payments. *Please make checks payable to St. Theresa Capital Campaign.* You will be mailed payment reminders and a special payment envelope in accordance with the payment plan you choose. Once completed, please return your pledge card in the weekly collection, bring it by the parish office or return it in the mail.

ONLINE GIVING

To make your gift online please visit <https://secure.qgiv.com/for/stthe>
In addition, please return this pledge card to the campaign office so we may secure your gift.

GIFTS OF STOCK

Donors can use their own broker/agent or the parish agent to transfer stock. If the stock has been held long-term (over one year), the donor does not have to pay capital gains tax on the stock, and is allowed a tax deduction for the full value of the stock. Donors may also choose to sell stock in order to claim a loss, which may be beneficial for tax circumstances. In either case, the stock must first be transferred to the parish before being liquidated. Please contact the campaign office for more information.

GIFTS FROM RETIREMENT ACCOUNTS

An IRA owner, age 70 1/2 or over, can directly transfer tax-free up to \$100,000 per year to an eligible charity. This option can be used for distribution from IRAs, regardless of whether the IRA owners itemize their deductions. Distributions from an employee-sponsored retirement plan, including SIMPLE IRAs and simplified employee pension (SEP) plans are not eligible. To qualify, the funds must be transferred directly by the IRA trustee to the eligible charity. Distributed amounts may be excluded from the IRA owner's income resulting in lower taxable income for the IRA owner.

GIFTS OF PROPERTY, LIFE INSURANCE, ANNUITIES, WILLS OR BEQUESTS

There are different ways to support St. Theresa both today and in the years to come via planned giving. Families or individuals can make gifts of real estate, personal property, automobiles, life insurance, estate bequests, annuities or charitable remainder trusts. For substantial gifts of property other than marketable securities, the IRS requires an appraisal. Please contact the campaign office for more information.

The gift plans in this brochure are provided as a suggested guideline when considering your gift. This campaign will need to receive gifts of all shapes and sizes in order to be successful. Please review the gift plans carefully and select one that fits your family's financial situation.

All contributions to the campaign are fully tax deductible for those who itemize their taxes. Gifts are not legally binding, but rather an indication of your intention to donate.

If you have any questions about the campaign or making your gift, please contact the Parish Office, 713.869.3783

YOUR PLEDGE CAN BE GIVEN IN MEMORY OR HONOR OF A LOVED ONE



ST. THERESA CAMPAIGN PRAYER

St. Theresa,
We pray for Your intercession
for our Parish, our School,
its Pastor, Deacons and People.
Pray for us that this,
our parish church and school,
dedicated to Your honor,
may grow and prosper.
Help us by Your intercession
to improve our Holy House
and the structures that house
the work of this parish
so we may continue
to welcome pilgrims,
edify the faithful,
educate the young,
nurture vocations,
and sanctify all souls
who hunger for truth
and thirst for the beauty
of holiness.

Help us to follow
the example of Your faith,
to be ready for service,
and humble in heart,
and let us rejoice always
in God our Savior.
May we be guarded
by Your intercessions
from sin and sorrow
to be shielded against pride
and envy, and teach us
to love the Lord Jesus,
and all souls for His sake.

Amen.



Memorials are special ways of honoring the people we love, whether they are living or deceased. Our new facilities will serve as a lasting tribute to honor the sacrifices our parishioners generously made. The good they do is not interred with them, but will remain to share in the divine activity of God here on earth.

St. Theresa Catholic Church will be a living memorial to the people who have served and sacrificed in support of the parish since its founding. Those who help to secure its future in this campaign will provide a legacy for future generations of parish families and friends. The legacy of these donors will remain as a visible sign of God's activity among us.

“*Those who help to secure its future in this campaign will provide a legacy for future generations of parish families and friends.*”

Due to a limited number of these special opportunities and that memorials are reserved on a first come, first served basis being only be designated once during the campaign, please contact the campaign office for the availability of each memorial opportunity. To reserve a memorial/naming opportunity, please contact the Campaign Office at 713.869.3783 and then return your completed pledge card promptly.

PEOPLE WHO MAKE IT HAPPEN

Many people contribute to the life of our parish and provide vision for our future. Our deepest gratitude extends to the members of the Campaign Committee, who have given the gifts of their time and talents to make this project a success.

And, of course, we could not have been able to reach out to everyone in our parish if it weren't for the help of our gracious and very dedicated volunteers. THANK YOU!

FUNDRAISING CONSULTANT



GUIDANCE IN GIVING, INC.

Catholic Stewardship, Development & Campaign Consultants
www.guidanceingiving.com

ST. THERESA CATHOLIC CHURCH & SCHOOL

6622 Haskell Street | Houston, Texas 77007

713.869.3783 | sttheresa.cc